

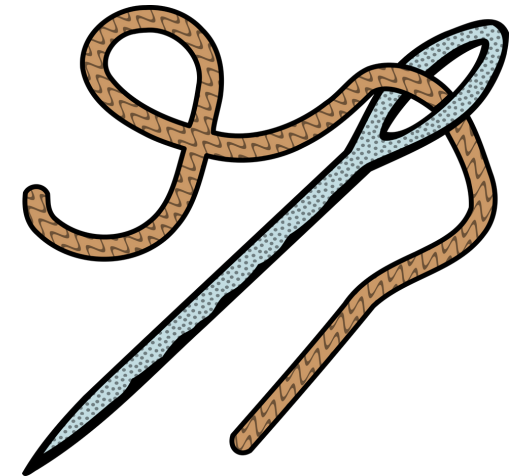
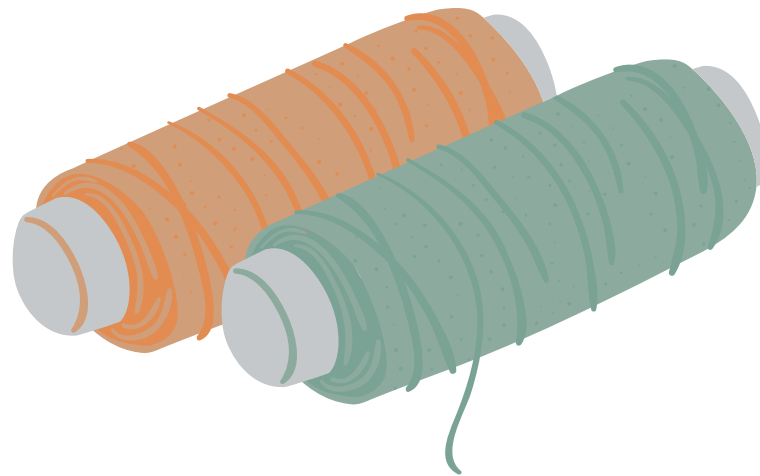
How to make a mask expander

10 steps

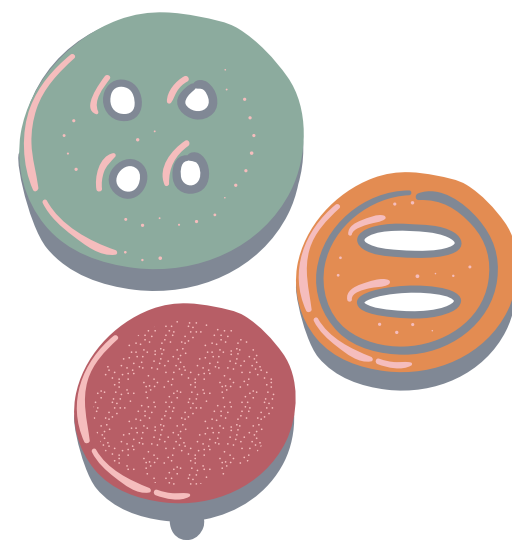
Materials needed:

thread

Needle



2 flat buttons



square piece of cotton fabric (at least 4 x4in)



pencil



image from Sew Crafty Me



image from Sew Crafty Me

How to make a mask expander

1

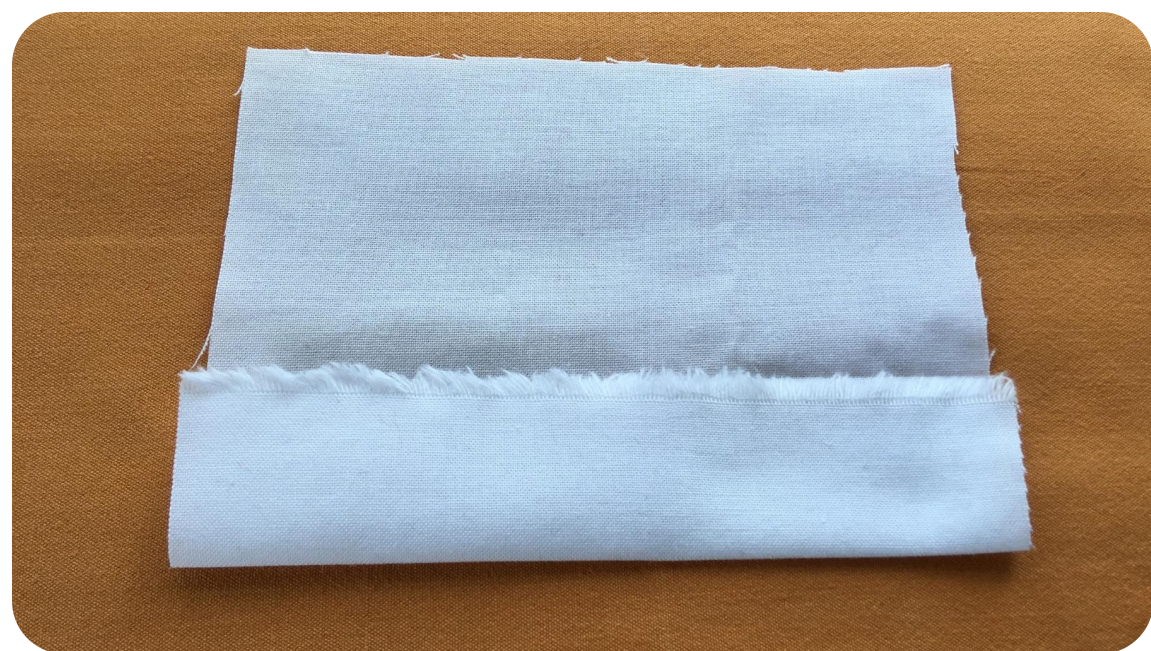
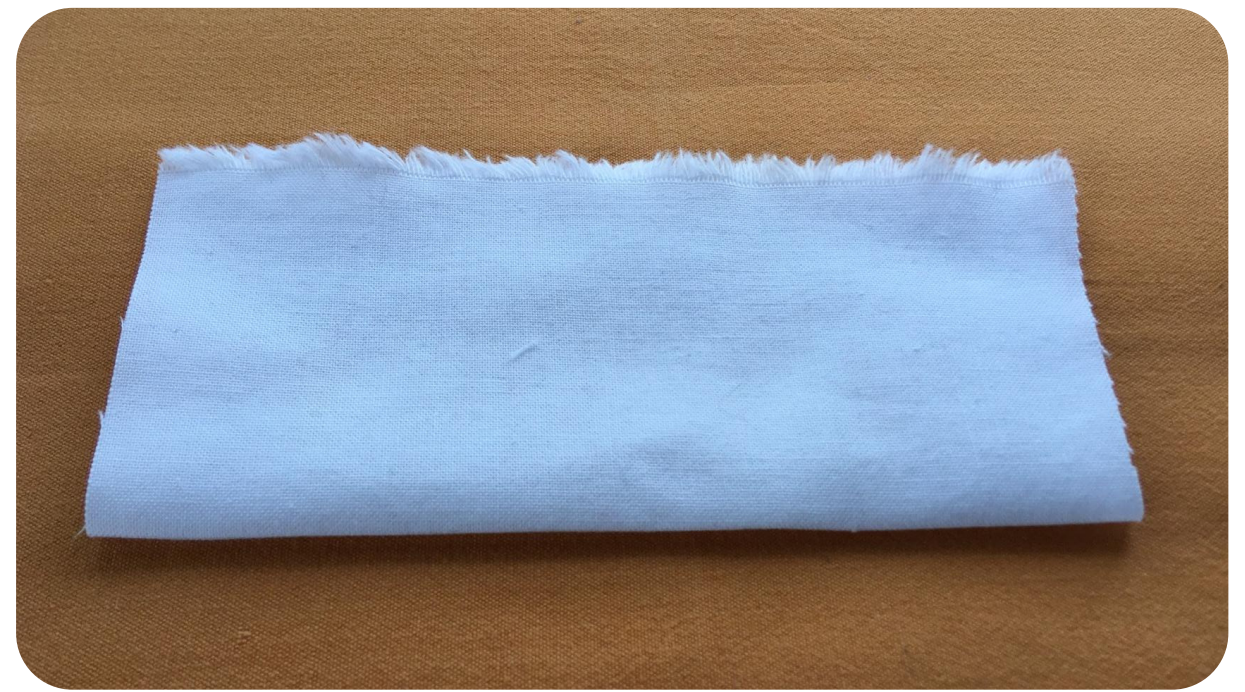
Thread the needle making sure to use a large knot at the end.

2

Fold and lightly crease fabric in half lengthwise

3

Open fabric and fold both outer edges lengthwise towards the middle crease. Firmly crease the edges.



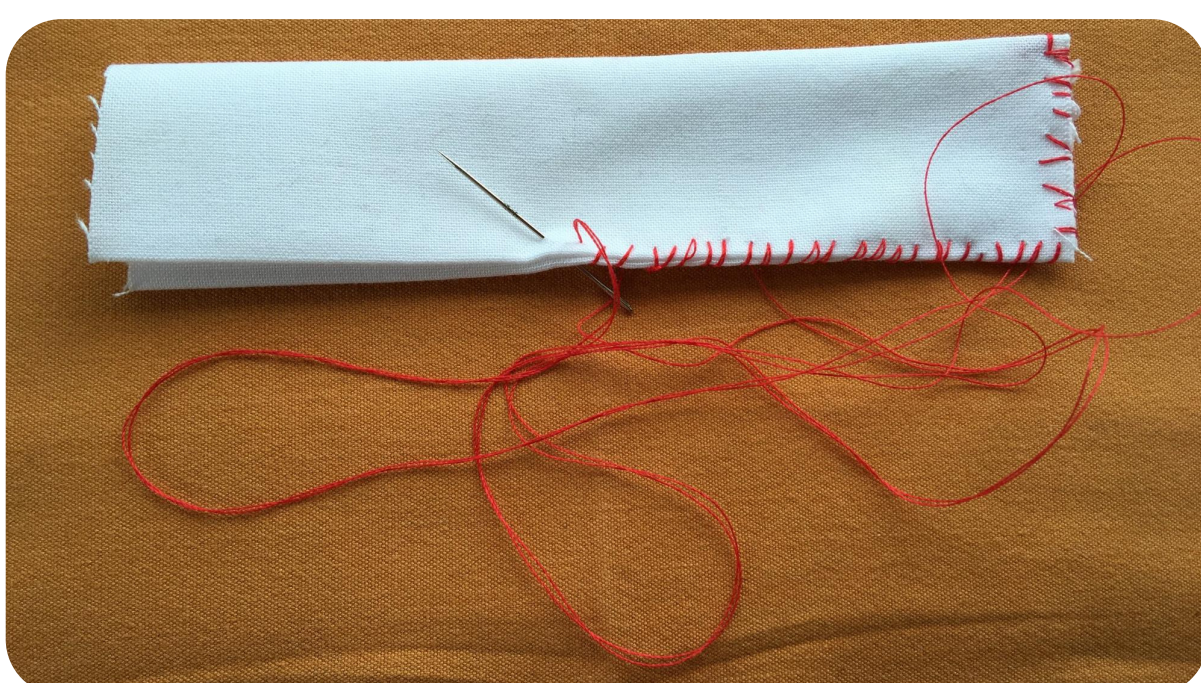
4

Without unfolding, fold the piece of fabric in half lengthwise and crease the new edges.



5

Starting at the open end of the folded fabric, use a whip stitch all around.



Whip Stitch

insert needle on one side of the fabric and pull through. without flipping fabric, insert needle on the same side of the fabric. The thread will loop around the edge of the fabric, holding all four layers in place.

How to make a mask expander

6

Once you've made your way around the outside of the fabric, tie a knot and cut away the remaining fabric.

8

Using your pencil, mark where the buttons will be placed.



7

Place a button on each end of the fabric rectangle, one centimeter away from the edge.



9

Sew on the buttons using your needle and thread.




10


Place the ear loops of your mask around a button




SEW a BUTTON

1. Start from the back of the fabric and bring needle through any button hole

 push the needle down through the other hole

 push the needle down through the hole that is diagonal across from the first

2. Repeat 2-3 times

 repeat through remaining holes

3. Tie a secure knot and cut the remaining thread.

4. Repeat with the button on the final side.